



[CLICK HERE
to view this collection](#)

[CLICK HERE
for more ideas](#)



Supplies: "Independence Journaling" Patterned Paper (Independence Day); "Stars and Stripes" Patterned Paper (Independence Day); "USA Words" Patterned Paper (Independence Day); Kraft and Cream Cardstock, Stickers (Independence Day); Cork; Flower and Star Punches; Corner Rounder Punch; Scallop Border Punch; Button; Twine; Brads; Blue Gems

Independence Day by Tania Willis

Use kraft colored items with a more muted collection to better match the patterned paper and stickers.



NEW SILHOUETTE SHAPES

CLICK
HERE
to see our
new Echo Park
shapes!

ECHO PARK PAPER ZOO DIE CUT SHAPES NOW AVAILABLE!

We've added hundreds of die cut and print and cut shapes to our
Silhouette online stores.



echo park paper co.

[CLICK HERE
to view this collection](#)

[CLICK HERE
for more ideas](#)



Supplies: Calendar Words" Patterned Paper (My Life); "Calendar Months" Patterned Paper (My Life); Grey Cardstock; Stickers (My Life); Twine; Mini Stapler and Staples

Everyday by Wendy Sue Anderson

Don't forget to capture the everyday moments during the summer months. Kids are around more often and this is a great opportunity to get additional photos of the family.





Things To Do Chart by Lisa Swift

DIMENSIONS: 9 1/2" X 12"

Supplies: "Calendar Words" Patterned Paper (My Life); White Cardstock; Stickers (My Life); Black Frame; Clothespin; Post-it Notes; Ribbon; Paperclip; Black White Board Marker; Velcro

1. Print a "to do" list onto white cardstock to fit the inside of a frame. Mount inside the frame with the frame glass on top of the printed paper.
2. Decorate the frame with the "My Life" stickers.
3. Decorate a clothespin with the "Calendar Words"
4. Add Velcro to the left side of the frame. Add Velcro to a black white board marker and mount the marker onto the frame Velcro.

Keep track of summer activities with this clever frame. The marker will easily wipe off the glass of the frame.

[CLICK HERE
to view this collection](#)

[CLICK HERE
for more ideas](#)

CLICK HERE
to view this collection

CLICK HERE
for more ideas



Supplies: "Teepee" Patterned Paper (Boys Rule); "Campout" Patterned Paper (Boys Rule); "Roar" Patterned Paper (Boys Rule); "Ninjas" Patterned Paper (Boys Rule); "Cars and Planes" Patterned Paper (Boys Rule); "Mighty" Patterned Paper (Boys Rule); Grey Cardstock; Stickers (Boys Rule); Alpha Stickers (Paper & Glue); Twine; Spray Mist; Sewing Machine: Blue Sewing Thread

Let's Go by Wendy Sue Anderson

Fussy cut words from the patterned papers to create "journaling" for each of your photos or journaling cards.





Look for ways to add texture to a sticker or fussy cut paper elements like the twine wrapped around the spools on this card.

DIMENSIONS: 6" X 4"

Supplies: Pretty Pattern" Patterned Paper (Sew Lovely); "Sew Sweet" Patterned Paper (Sew Lovely); "Spools" Patterned Paper (Sew Lovely); Element Stickers (Sew Lovely); Twine; Button; Pearl Gems

You Are Sew Beautiful by Tegan Swiat

1. Cut a 6" x 8" rectangle from the "Pretty Pattern" paper and fold in half to form the card base.
2. Cut the "pattern notes" paper from the "Sew Sweet" patterned paper, trim down to fit in the center of the card and mount.
3. Cut three spools from the "Spools" patterned paper. Wrap twine around the spools and attach to the card.
4. Add alpha stickers and element stickers to the right side of the card.
5. Decorate the card with a pink button and pink pearl gems.

CLICK HERE
to view this collection

CLICK HERE
for more ideas

When creating a dimensional die cut shape, cut at least three of the same shape from the paper. Attach them in the center and then fold up each layer to create dimension.



DIMENSIONS: 8 1/4" X 6 3/4"

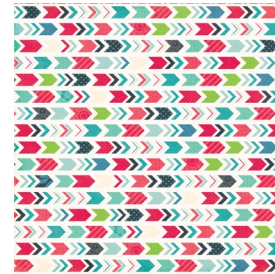
Supplies: "Spools" Patterned Paper (Sew Lovely); "Lovely Floral" Patterned Paper (Sew Lovely); "Pretty Pattern" Patterned Paper (Sew Lovely); "Trim Marks" Patterned Paper (Sew Lovely); Kraft Cardstock; Element Stickers (Sew Lovely); Button; Twine; Brown Stamping Ink; Silhouette Die Cut Machine; Label and Dress Form Digital Die Cut Shapes

Be You-tiful Wall Hanging by Tegan Skwiat

1. Use the Silhouette Die Cut Machine to cut the digital label die cut shapes from the patterned papers listed above.
2. Rub the edges of each patterned paper label shape with brown stamping ink.
3. Mount the labels on top of each other adding the large rose sticker on the blue script patterned paper.
4. On the top layer, add a title cut from kraft cardstock and the "Trim Marks" patterned paper using the Silhouette machine.
5. Decorate the top layer with a button and stickers from the "Sew Lovely" Element Sticker sheet. Wrap twine around the spool sticker and mount on the card front as well.
6. Use the Silhouette Die Cut Machine to cut a dress form from the "Trim Marks" patterned paper four times. Machine stitch down the vertical center of the four shapes. Fold up each shape and rub the edges with brown stamping ink before mounting the 3d dress shape onto the front of the wall hanging.

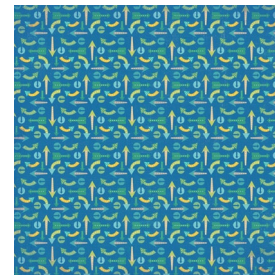
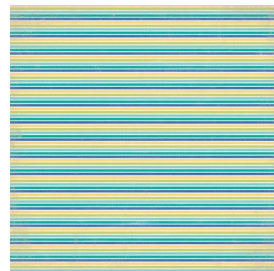
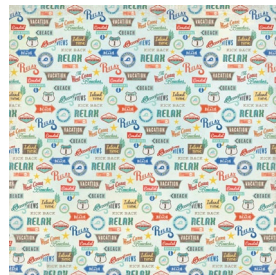
CARTA BELLA

COMING SOON!



A family is made up of people who care about each other. We know you'll love this collection designed for families everywhere. This **"We Are Family"** collection is dedicated to telling your family's story. Elements range from sweet homes to adventurous icons helping you record both day-to-day memories, as well as, family outings you might take together. Celebrate those you love with this beautiful release dedicated to YOUR family.

Shipping JUNE 2014



Let's head to the beach with this charming new collection titled **"Walking on Sunshine."** This delightful release is full of bright, happy colors and sweet patterns. Whether you spend the day at the beach or just enjoy a dip in the pool, you'll love having this collection to document your favorite water and sand memories. A retro feel to this collection gives it a cool vibe, which makes it even more dynamic.



echo park paper co.

COMING SOON!



Shipping JUNE 2014!



Sail away with this sophisticated, nautical-themed collection. The "Ahoy There" release is full of sea-faring images and beach-inspired elements. This stunning collection is perfect for outdoor activities, memories at the beach, and even your favorite cruise vacation. This collection's so gorgeous it's bound to "float your boat" making your summer memories ones you'll cherish always!

CARTA BELLA



echo park paper co.

©2014 Echo Park Paper Co. LLC | www.echoparkpaper.com

1177 South 1680 West Orem, Utah 84058 | 800.701.1115

For more information regarding our current products visit our website
or find us on facebook at facebook.com/echoparkpaper.

